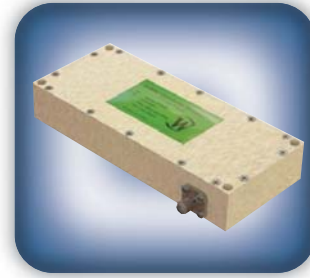




DECADES AHEAD[®]
high power RF devices

Werlatone[®], Inc.

17 Jon Barrett Road Patterson, New York 12563
T (845) 278 2220 www.werlatone.com
F (845) 278 3440 sales@werlatone.com



2-Way Combiner/Divider

Model D7823

Frequency: 500 - 2500 MHz

Power: 200 W CW
2 kW Peak

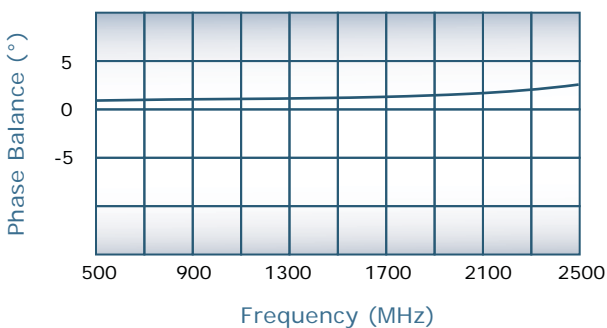
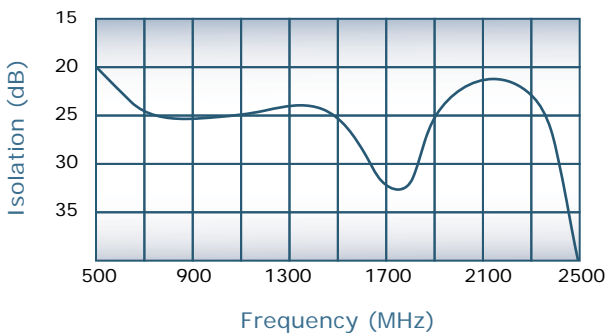
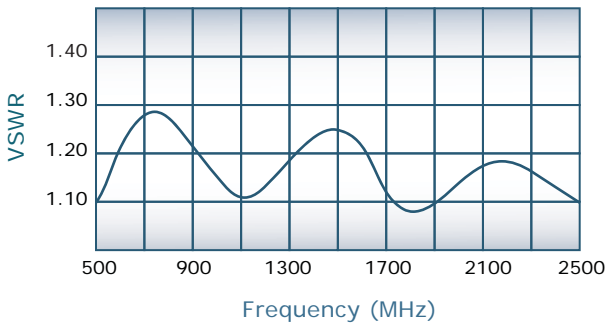
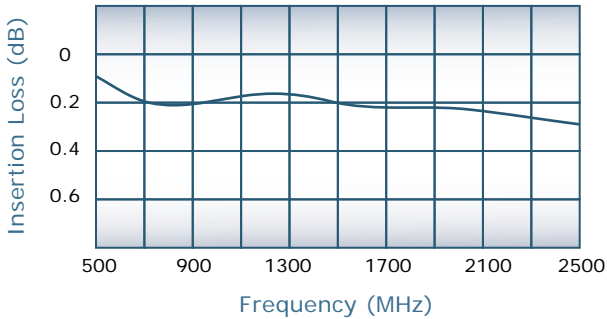
Insertion Loss: 0.4 dB Max.

VSWR: 1.35:1 Max.

Isolation: 15 dB Min.

Phase Balance: $\pm 5^\circ$ Max.

Amplitude Balance: 0.2 dB Max.



Notes

- All specifications guaranteed
- Test data provided with each unit shipped
- Alternate connector configurations upon request
- Weight: 0.75 Pounds
- Operating Temperature: -55°C to +75°C
- Unit will handle 100 Watt split into 2 antennas
- Unit will tolerate input failures on the adjacent port
- Unit will operate continuously, at rated power, into 3:1 Load VSWR

Connector Configurations

Model	J1 (Sum Port)	J2,J3 (Input/Output)
D7823-10	N Female	N Female
D7823-12	N Female	SMA
D7823-102	SMA	SMA

