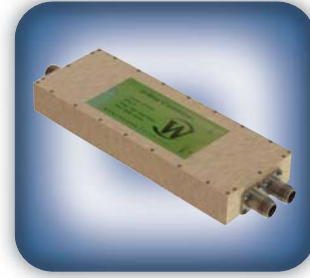




**DECADES AHEAD<sup>®</sup>**  
high power RF devices

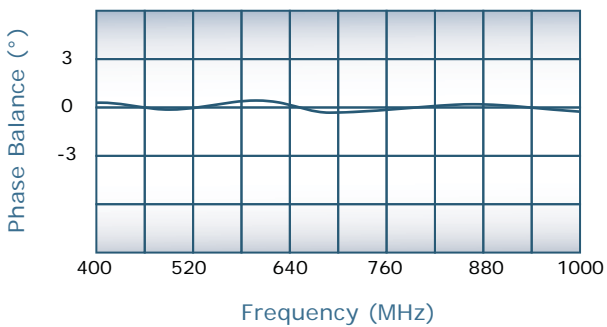
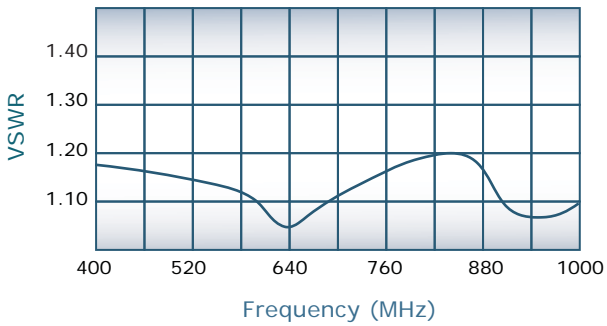
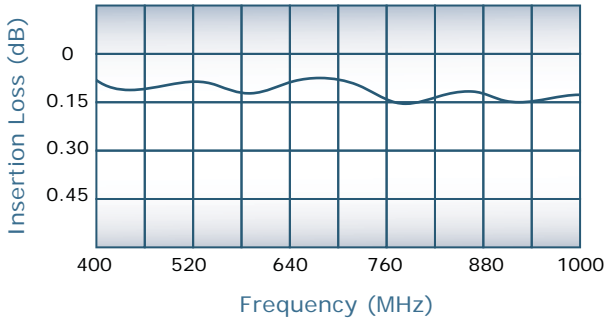
**Werlatone<sup>®</sup>, Inc.**

17 Jon Barrett Road Patterson, New York 12563  
T (845) 278 2220      www.werlatone.com  
F (845) 278 3440      sales@werlatone.com



**2-Way *Non-Isolated* Combiner/Divider**

**Model D7403**



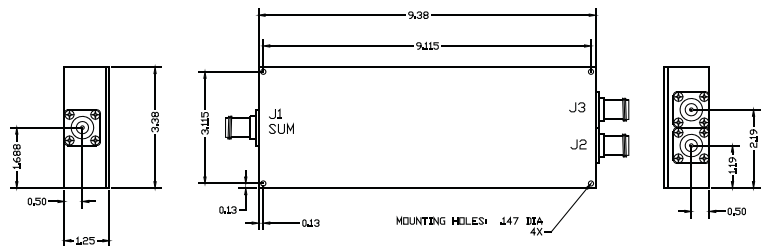
Frequency:	400 - 1000 MHz
Power:	2,000 W CW
Insertion Loss:	0.25 dB Max.
VSWR:	1.20:1 Max.
Phase Balance:	± 3° Max.
Amplitude Balance:	0.15 dB Max.

**Notes**

- All specifications guaranteed
- Test data provided with each unit shipped
- Alternate connector configurations upon request
- Weight: 3 Pounds
- Operating Temperature: -55°C to +75°C

**Connector Configurations**

Model	J1 (Sum Port)	J2,J3 (Input/Output)
D7403-10	N Female	N Female
D7403-12	N Female	SMA
D7403-13	N Female	BNC
D7403-102	SMA	SMA



**SINCE 1965**

Specifications subject to change without notice



**Send Us Your Specs for Custom Designs**