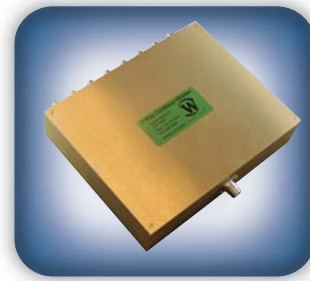




DECADES AHEAD[®]
high power RF devices

Werlatone[®], Inc.

17 Jon Barrett Road Patterson, New York 12563
T (845) 278 2220 www.werlatone.com
F (845) 278 3440 sales@werlatone.com



8-Way *Non-Magnetic* Combiner/Divider

Model D7169

Frequency:	390 - 400 MHz
Power:	200 W CW 2.5 kW Peak
Insertion Loss:	0.5 dB Max.
VSWR:	1.25:1 Max.
Isolation:	20 dB Min.
Phase Balance:	$\pm 2^\circ$ Max.
Amplitude Balance:	0.3 dB Max.

Supplied with 45° Phase Shift from Adjacent Port

Notes

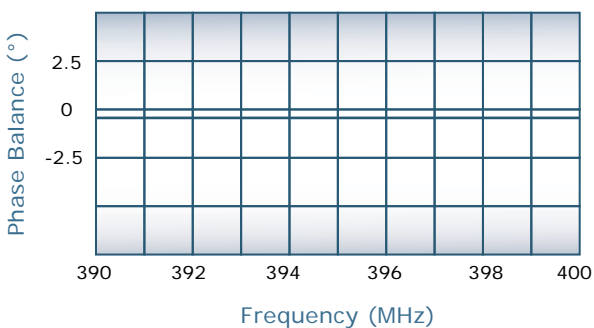
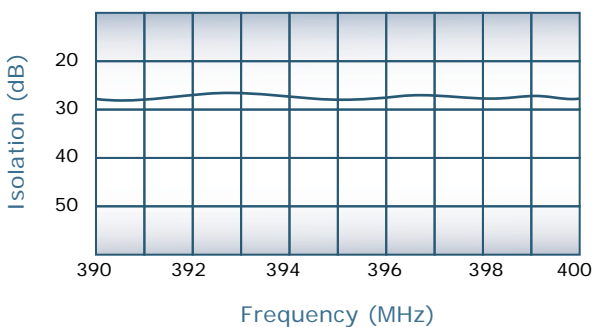
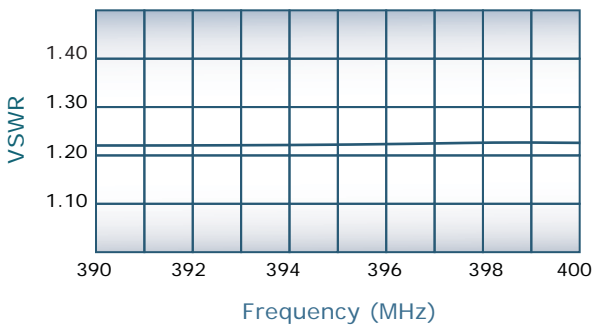
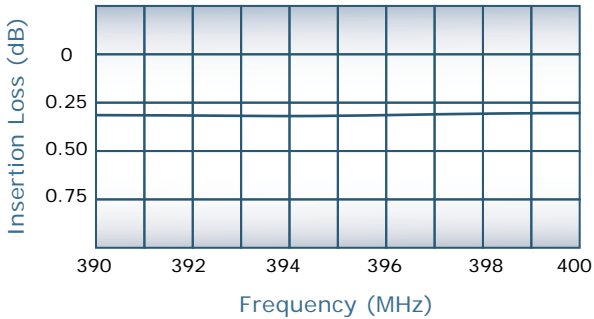
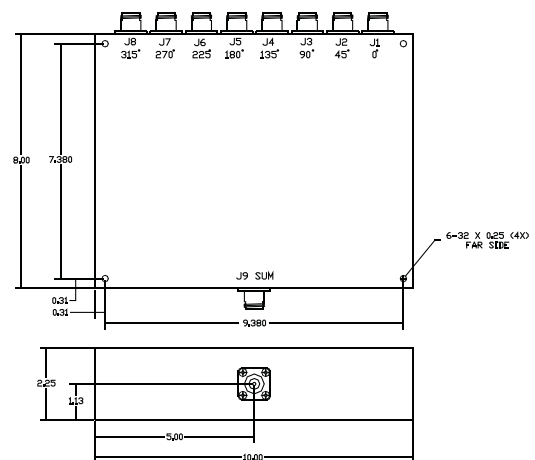
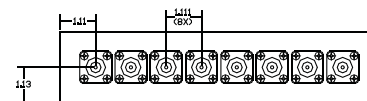
- All specifications guaranteed
- Test data provided with each unit shipped
- Alternate connector configurations upon request
- Operating Temperature: -55°C to +75°C
- Unit available without phase shifting



Electrical performance unaffected by magnetic field

Connector Configurations

Model	J9 (Sum Port)	J1-J8 (Input/Output)
D7169-10	N Female	N Female
D7169-12	N Female	SMA



Specifications subject to change without notice



Send Us Your Specs for Custom Designs