



DECADES AHEAD[®]
high power RF devices

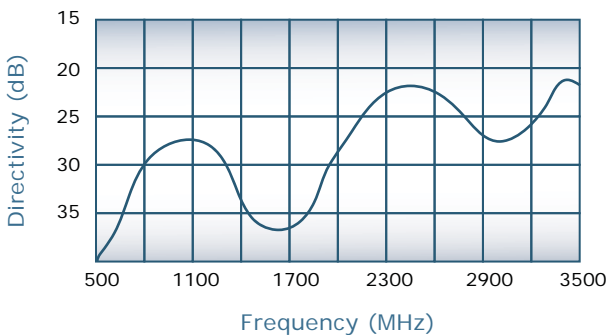
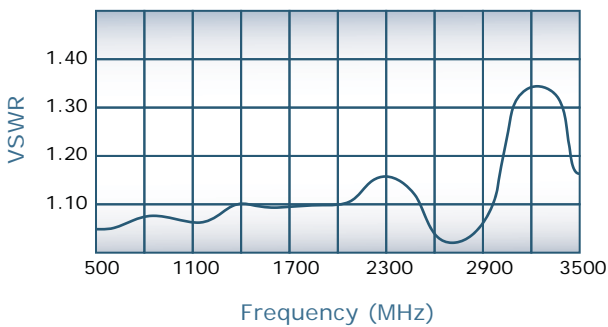
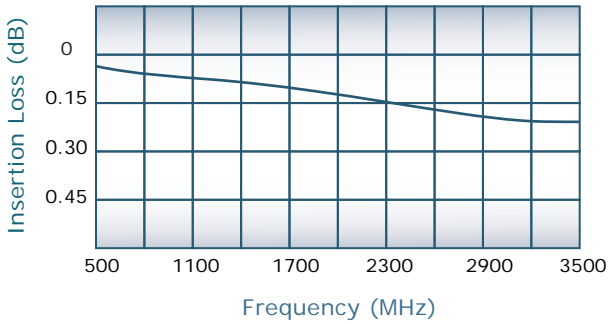
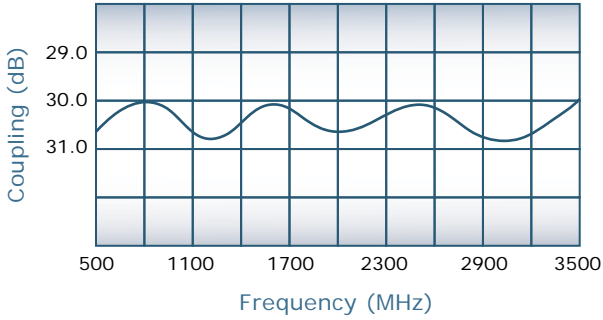
Werlatone[®], Inc.

17 Jon Barrett Road Patterson, New York 12563
 T (845) 278 2220 www.werlatone.com
 F (845) 278 3440 sales@werlatone.com



30 dB Bi-Directional Coupler
Model C8025

Frequency:	500 - 3500 MHz
Power:	125 W CW
Coupling:	30 ± 1.0 dB Nom.
Insertion Loss:	0.3 dB Max. *
VSWR:	1.25:1 Max.
Flatness:	± 0.75 dB Max.
Directivity:	18 dB Min.

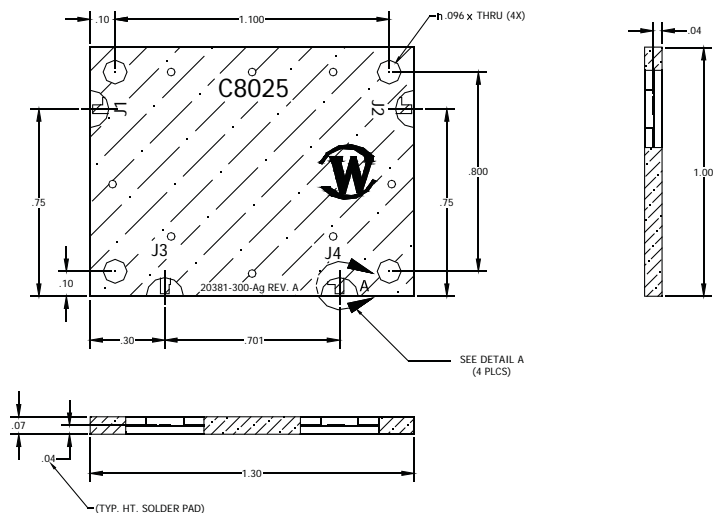


Notes

- * Does not include theoretical coupling loss
- All specifications guaranteed
- Test data provided with each unit shipped
- Drop-In Component
- Hatched areas denote metallization
- Operating Temperature: -55°C to +75°C
- Surface Finish Options:
 - C8025-Pb: Electrodeposited Tin/Lead
 - C8025-Sn: Immersion Tin
 - C8025-Ag: Immersion Silver
 - C8025-Au: ENIG

Port Legend

J1	J2	J3	J4
Input	Output	Forward (-30dB)	Reverse (-30dB)



Specifications subject to change without notice



Send Us Your Specs for Custom Designs