



DECADES AHEAD[®]
high power RF devices

Werlatone[®], Inc.

17 Jon Barrett Road Patterson, New York 12563
T (845) 278 2220 www.werlatone.com
F (845) 278 3440 sales@werlatone.com



**50 dB Dual Directional Coupler
Model C6238**

Frequency: 1.5 - 30 MHz

Power: 5,000 W CW

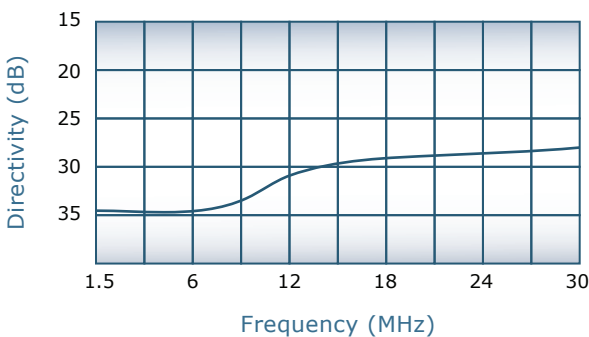
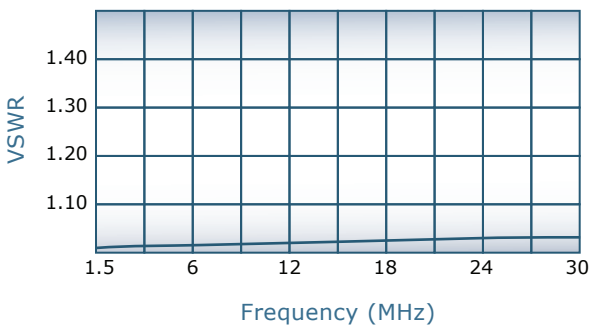
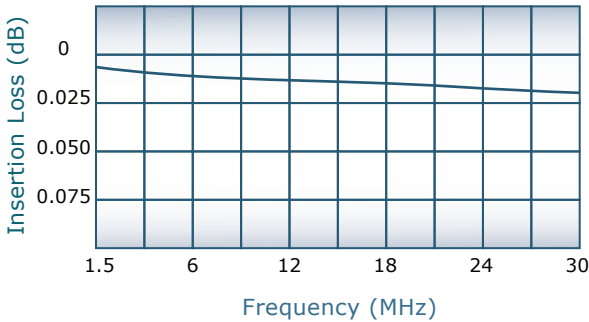
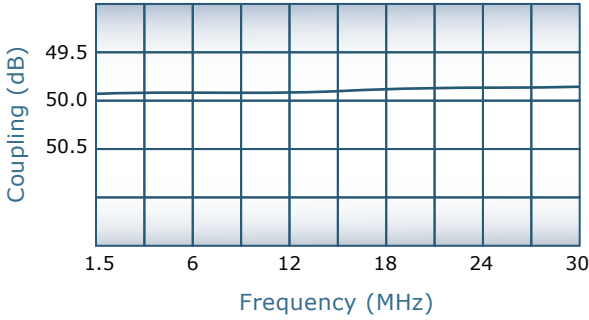
Coupling: 50 ± 1.0 dB Nom.

Insertion Loss: 0.05 dB Max. *

VSWR: 1.10:1 Max.

Flatness: ± 0.3 dB Max.

Directivity: 25 dB Min.

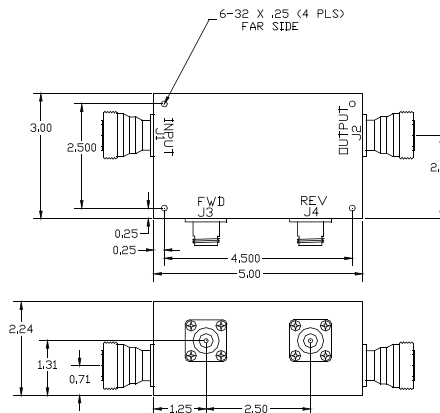


Notes

- * Does not include theoretical coupling loss
- All specifications guaranteed
- Test data provided with each unit shipped
- Weight: 1.5 Pounds
- Operating Temperature: -55°C to +75°C
- Uni-Directional version available

Connector Configurations

Model	J1,J2 (Main Line)	J3,J4 (Coupled Ports)
C6238-10	N Female	N Female
C6238-12	N Female	SMA
C6238-20	7/16 Female	N Female
C6238-33*	LC Female	BNC
C6238-61	HN Female	N Female



(* Note connector placement due to connector flange size)

