

PRODUCT DATA SHEET

C6467

3-Port Uni-Directional Coupler: Consists of a main line and a coupled line. One end of the coupled line is internally terminated, while the other end serves as a coupled port. Ideal for sampling and monitoring power in one direction at a given time. It is necessary to physically reverse the orientation of the unit to change from a forward to a reverse power measurement.

Features:

High Power

Wide Bandwidths

Small Size

Flat Coupling

Custom Designs Available

Electrical Specifications:

Frequency: 225 - 400 MHz
Power: 500 W CW
Coupling: 20 ± 1.0 dB Max.
Insertion Loss: 0.4 dB Max.
Flatness: ± 0.5 dB Max.
VSWR (ML): 1.30:1 Max.
Directivity: 20 dB Min.

Mechanical Specifications:

Type: Connectorized
Material: Aluminum 6061-T6
Surface Finish: Chem. Film Per MIL-DTL-5541F
Type I Class 3 (Yellow Iridite)
RoHS Compliant Available
Operating Temperature: -55°C to +75°C
Storage Temperature: -60°C to +85°C
Humidity: 95% Non-Condensing
Size: 7.0 x 2.0 x 1.25"
Weight: 1.25 lbs.

Port Configurations:

Model

C6467-10
C6467-12
C6467-102

Input (J1)

N Female
N Female
SMA

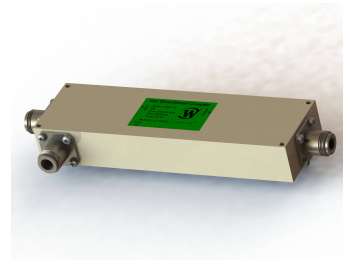
Output (J2)

N Female
N Female
SMA

Fwd (J3)

N Female
SMA
SMA

Werlatone® Broadband Dual, Uni, and Bi Directional RF Couplers are designed to tolerate the most stringent operating conditions associated with military and EMC testing environments. Many of our RF Directional Couplers, designated Mismatch Tolerant®, will operate continuously, at rated power, into a severe load mismatch condition. Our multi-octave Directional Couplers maintain exceptional coupling flatness, directivity, VSWR, and insertion loss.

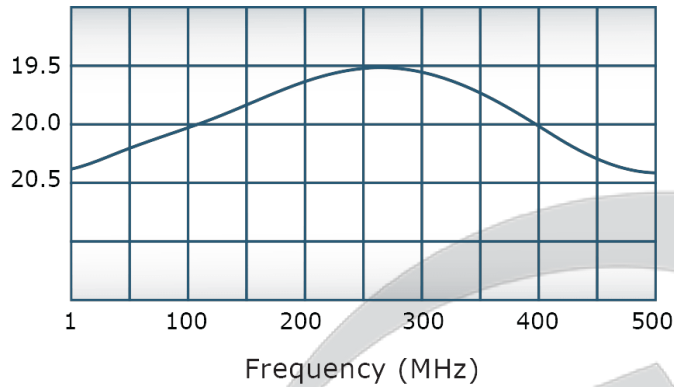


PRODUCT DATA SHEET

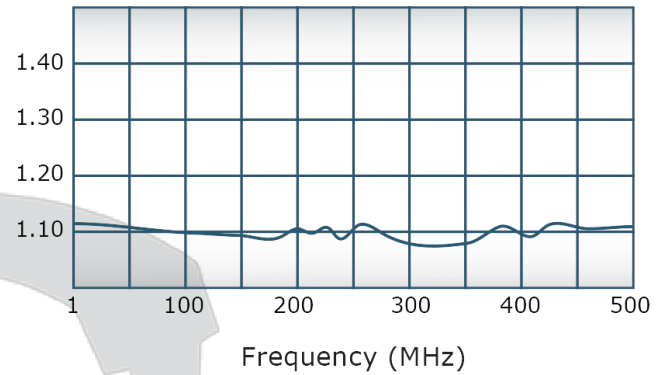
C6467

Performance Data (Specifications subject to change without notice):

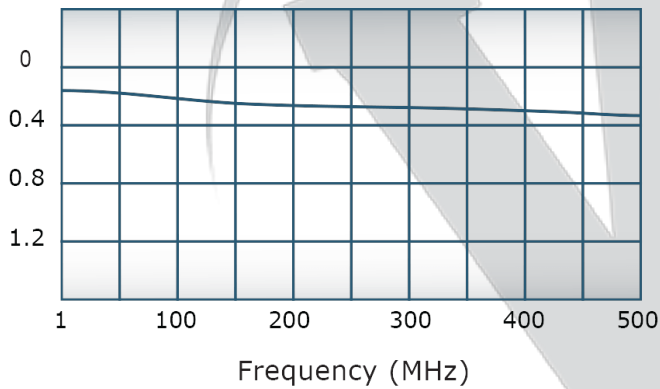
Coupling:



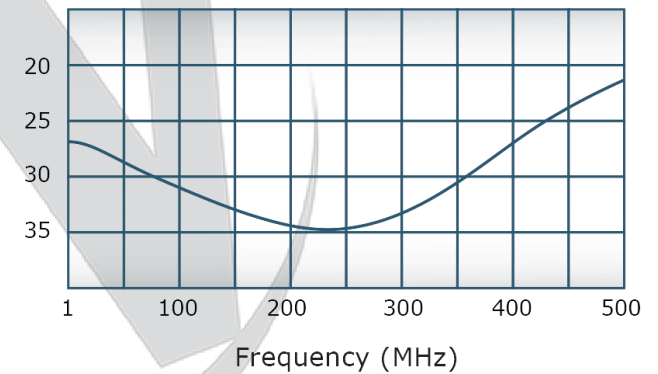
VSWR:



Insertion Loss:



Directivity:



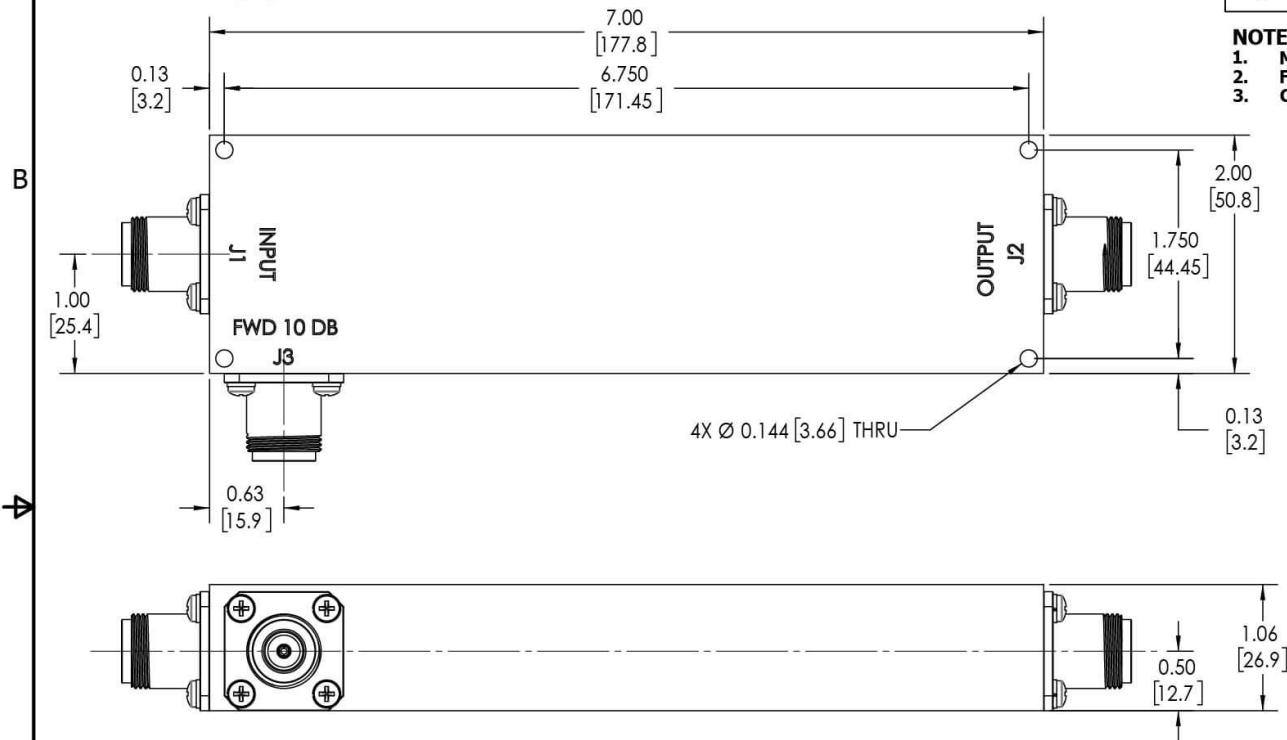
Restriction on use, duplication, or disclosure of proprietary information. This document contains proprietary information which is the sole property of Werlatone, Inc.


Werlatone, Inc. 17 Jon Barrett Road Patterson, NY 12563 T:(845)278-2220 F:(845)278-3440 sales@werlatone.com www.werlatone.com

RESTRICTION ON USE, DUPLICATION OR DISCLOSURE OF PROPRIETARY INFORMATION
This document contains proprietary information which is the sole property of Werlatone, Inc.

REVISION HISTORY			
REV.	REVISION RECORD	DATE	APPROVED
A	ECN 9696	8/14/2019	RB

- NOTES: UNLESS OTHERWISE SPECIFIED**
- MATERIAL: ALUMINUM 6061-T6**
 - FINISH: CHEM FILM PER MIL-DTL-5541F TYPE I CLASS 3 (YELLOW IRIDITE)**
 - CONNECTORS: J1-J3: N FEMALE**



UNLESS OTHERWISE SPECIFIED		OWN	DATE	 WERLATONE SINCE 1965 17 Jon Barrett Rd Patterson, NY 12563
INTERPRET DRAWING IN ACCORDANCE WITH MIL-STD-100		SD	8/14/2019	
DIMENSIONS FOR ASME Y14.5M-2009		CHK	DATE	
PARENTHESES FOR REF ONLY		CS	8/14/2019	
DIMENSIONS ARE IN INCHES		ENGR	DATE	
DIMENSIONAL LIMITS APPLY BEFORE PROCESSES		INFR	DATE	OUTLINE SIZE CAGE CODE DWG NO B 10731-500
TOLERANCES:		QA	DATE	
ANGLES ± 2°		RLSE	DATE	
3 PL ± .005 [13]				
2 PL ± .015 [38]				
REMOVE ALL BURRS AND SHARP EDGES R.01 MAX				SCALE 1:1 SHEET 1 OF 1
CONCENTRICITY MACHINED DIA. .002 FIM				
MACHINE TOOL MISMATCH .003 MAX				
THIRD ANGLE PROJECTION				
NEXT ASSY USED ON APPLICATION				

Restriction on use, duplication, or disclosure of proprietary information. This document contains proprietary information which is the sole property of Werlatone, Inc.
Werlatone, Inc. 17 Jon Barrett Road Patterson, NY 12563 T:(845)278-2220 F:(845)278-3440 sales@werlatone.com www.werlatone.com