

## PRODUCT DATA SHEET

**C7050**

**3-Port Uni-Directional Coupler:** Consists of a main line and a coupled line. One end of the coupled line is internally terminated, while the other end serves as a coupled port. Ideal for sampling and monitoring power in one direction at a given time. It is necessary to physically reverse the orientation of the unit to change from a forward to a reverse power measurement.

### Features:

High Power      Wide Bandwidths      Small Size      Flat Coupling      Custom Designs Available

### Electrical Specifications:

Frequency: 20 - 180 MHz  
Power: 100 W CW  
Coupling:  $10 \pm 1.0$  dB Max.  
Insertion Loss: 0.5 dB Max.  
Flatness:  $\pm 0.25$  dB Max.  
VSWR (ML): 1.30:1 Max.  
Directivity: 20 dB Min.

### Mechanical Specifications:

Type: Connectorized  
Material: Aluminum 6061-T6  
Surface Finish: Chem. Film Per MIL-DTL-5541F  
Type I Class 3 (Yellow Iridite)  
RoHS Compliant Available  
Operating Temperature: -55°C to +75°C  
Storage Temperature: -60°C to +85°C  
Humidity: 95% Non-Condensing  
Size: 2.0 x 2.0 x 1.87"

### Connector Configurations:

Model	Input (J1)	Output (J2)	Fwd (J3)
C7050-10	N Female	N Female	N Female
C7050-12	N Female	N Female	SMA
C7050-13	N Female	N Female	BNC
C7050-102	SMA	SMA	SMA

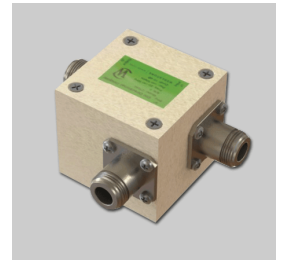
**Werlatone®** Broadband Dual, Uni, and Bi Directional RF Couplers are designed to tolerate the most stringent operating conditions associated with military and EMC testing environments. Many of our RF Directional Couplers, designated Mismatch Tolerant®, will operate continuously, at rated power, into a severe load mismatch condition. Our multi-octave Directional Couplers maintain exceptional coupling flatness, directivity, VSWR, and insertion loss.



# WERLATONE

Model C7050

Connectorized Directional Couplers

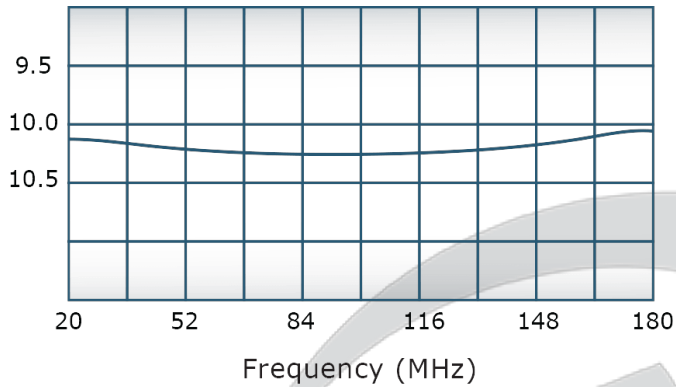


## PRODUCT DATA SHEET

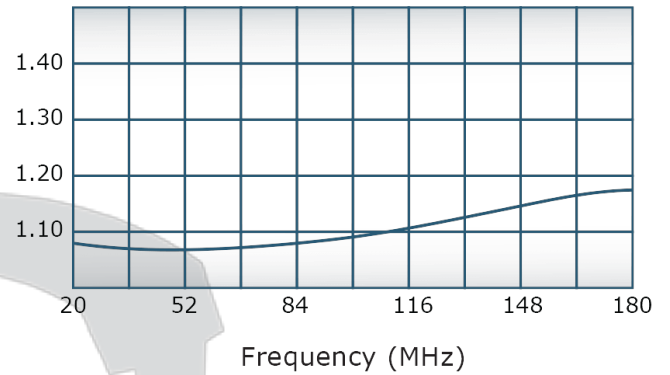
C7050

### Performance Data (Specifications subject to change without notice):

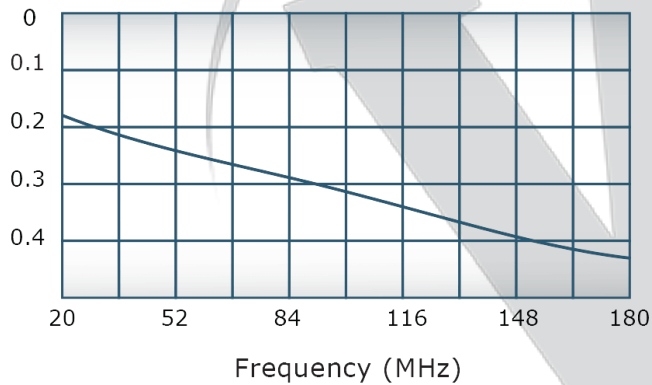
Coupling:



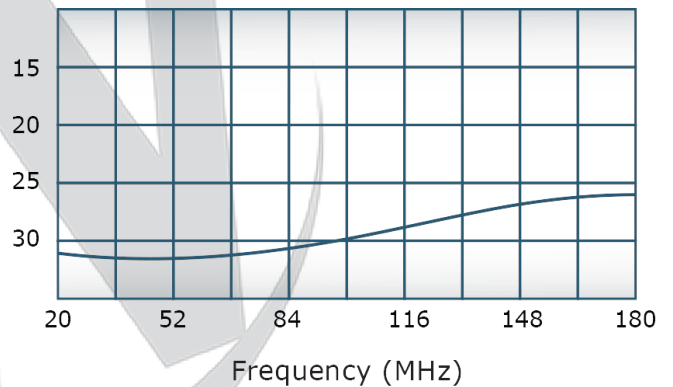
VSWR:



Insertion Loss:



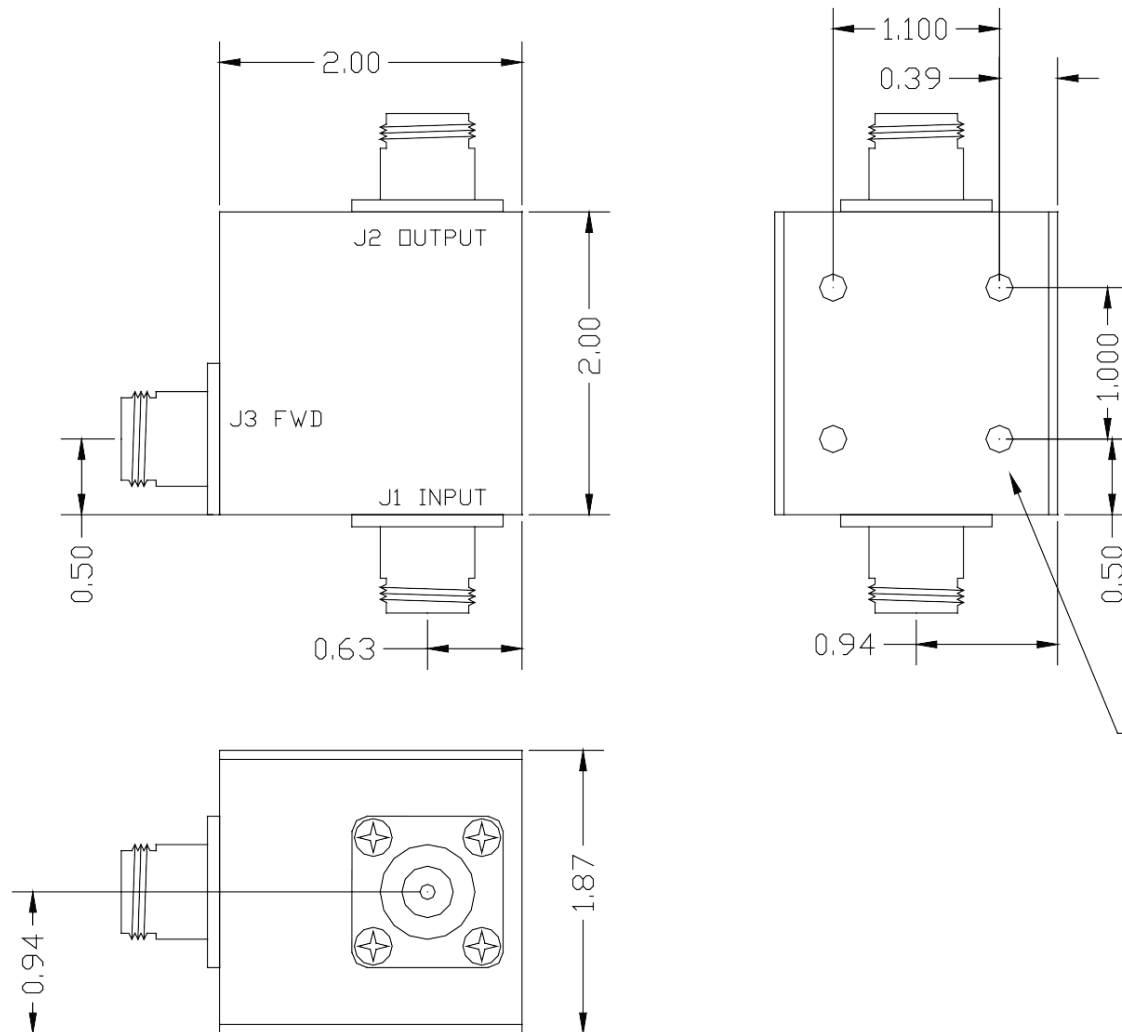
Directivity:



**Restriction on use, duplication, or disclosure of proprietary information.** This document contains proprietary information which is the sole property of Werlatone, Inc.

Werlatone, Inc. 17 Jon Barrett Road Patterson, NY 12563 T:(845)278-2220 F:(845)278-3440 sales@werlatone.com www.werlatone.com

DATE	SYM	REVISION RECORD	AUTH	DR	CK
7/6/07	REV A	ECN 4270	MJ		



MOUNTING: 6-32X0.25  
THREADED INSERT  
\*UNIT MUST BE HEATSUNK  
FOR PROPER OPERATION\*

THIS DRAWING CONTAINS INFORMATION  
PROPRIETARY TO WERLATONE INC. AND  
MAY NOT BE USED OR COPIED WITHOUT  
THE WRITTEN CONSENT OF WERLATONE INC.

TOLERANCE	WERLATONE INC.		
XX +/- .015 XXX +/- .005	USED ON: C7050	SCALE	DRAWN BY: MJ APPVD BY:
	DATE 2/14/03	DRAWING NUMBER	10893-500

**Restriction on use, duplication, or disclosure of proprietary information.** This document contains proprietary information which is the sole property of Werlatone, Inc.  
Werlatone, Inc. 17 Jon Barrett Road Patterson, NY 12563 T:(845)278-2220 F:(845)278-3440 sales@werlatone.com www.werlatone.com