

PRODUCT DATA SHEET

C8098

4-Port Bi-Directional Coupler: Similar to the 3-Port Uni-Directional Coupler, except that both ends of the coupled line serve as coupled ports. Convenient for simultaneously monitoring both forward and reverse power. The directivity of this coupler design is, however, dependent upon well matched 50 Ohm loads on the coupled ports.

Features:

High Power Wide Bandwidths Small Size Flat Coupling Custom Designs Available

Electrical Specifications:

Frequency: 800 - 2000 MHz
Power: 200 W CW
Coupling: 30 ± 1.0 dB Max.
Flatness: ± 0.7 dB Max.
VSWR (ML): 1.20:1 Max.
Directivity: 20 dB Min.

Mechanical Specifications:

Type: Drop-In
Operating Temperature: -55°C to +75°C
Storage Temperature: -60°C to +85°C
Surface Finish Options:
C8098-Pb: Electrodeposited Tin/Lead
C8098-Sn: Immersion Tin
C8098-Ag: Immersion Silver
C8098-Au: ENIG
Size: 1.3 x 1.0 x 0.07"

Hatched areas denote metallization

Port Configurations:

J1 Input **J2** Output **J3** Forward (-30 dB) **J4** Reverse (-30 dB)

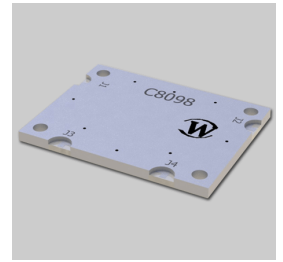
Werlatone® Broadband Dual, Uni, and Bi Directional RF Couplers are designed to tolerate the most stringent operating conditions associated with military and EMC testing environments. Many of our RF Directional Couplers, designated Mismatch Tolerant®, will operate continuously, at rated power, into a severe load mismatch condition. Our multi-octave Directional Couplers maintain exceptional coupling flatness, directivity, VSWR, and insertion loss.



WERLATONE

Model C8098

Directional Couplers Non-Connectorized

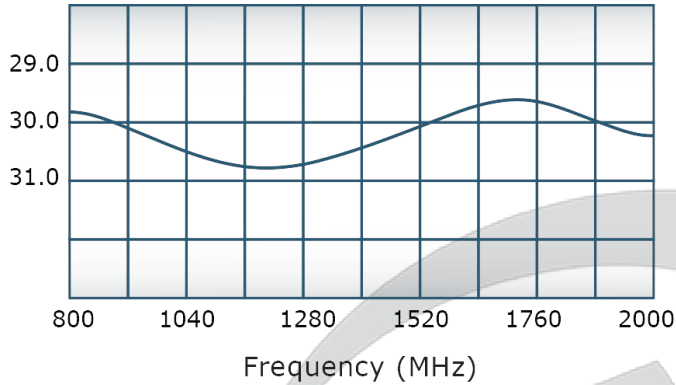


PRODUCT DATA SHEET

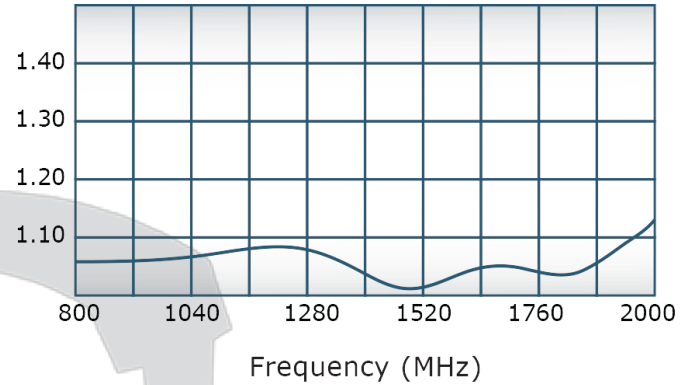
C8098

Performance Data (Specifications subject to change without notice):

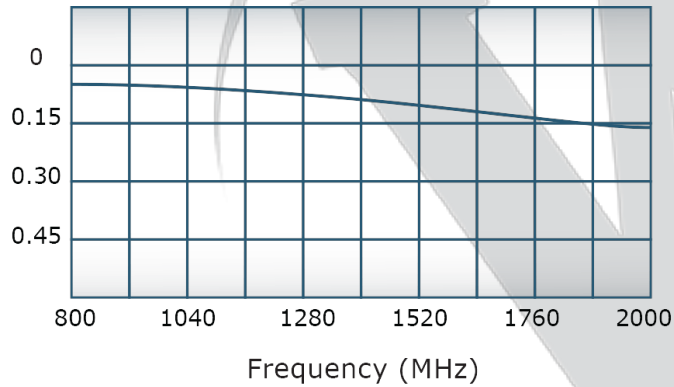
Coupling:



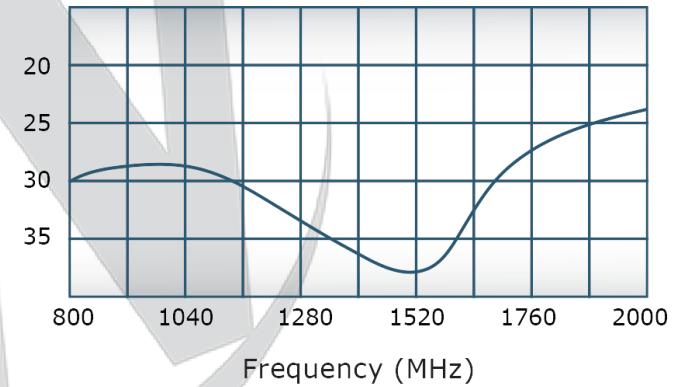
VSWR:



Insertion Loss:



Directivity:

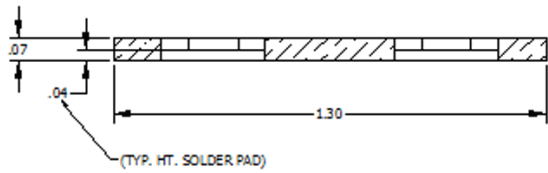
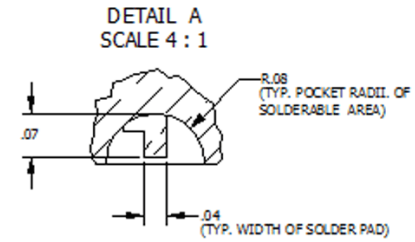
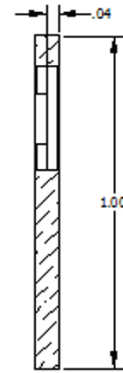
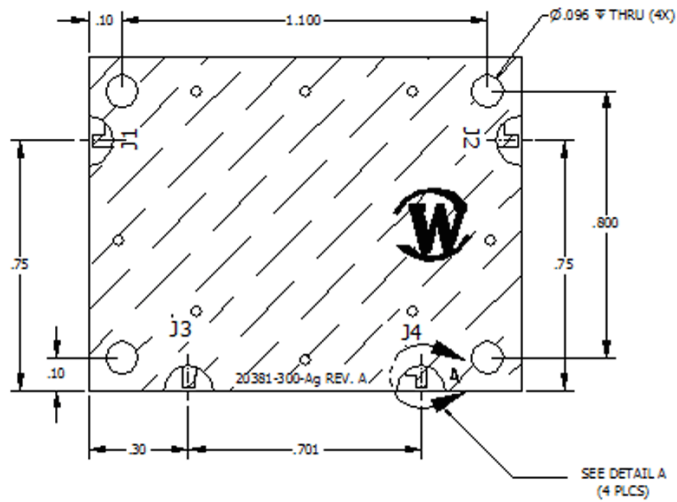


Restriction on use, duplication, or disclosure of proprietary information. This document contains proprietary information which is the sole property of Werlatone, Inc.

Werlatone, Inc. 17 Jon Barrett Road Patterson, NY 12563 T:(845)278-2220 F:(845)278-3440 sales@werlatone.com www.werlatone.com

RESTRICTION ON USE, DUPLICATION OR DISCLOSURE OF PROPRIETARY INFORMATION
This document contains proprietary information which is the sole property of Werlstone, Inc.

REVISIONS HISTORY					
DATE	REV	REVISION DESCRIPTION	AUTH	CHK	APPV
7/17/2016	A	FIG. # 4917	RL	RL	RL
4/12/2016	K	FIG. # 5122	RL	RL	RL

[illegible]

Restriction on use, duplication, or disclosure of proprietary information. This document contains proprietary information which is the sole property of Werlatone, Inc. Werlatone, Inc. 17 Jon Barrett Road Patterson, NY 12563 T:(845)278-2220 F:(845)278-3440 sales@werlatone.com www.werlatone.com